

# Kavod Elementary Charter

## California Department of Education School Accountability Report Card Reported Using Data from the 2014-15 School Year

Published During 2015-16

By February 1 of each year, every school in California is required by state law to publish a School Accountability Report Card (SARC). The SARC contains information about the condition and performance of each California public school. Under the Local Control Funding Formula (LCFF) all local educational agencies (LEAs) are required to prepare a Local Control Accountability Plan (LCAP), which describes how they intend to meet annual school-specific goals for all pupils, with specific activities to address state and local priorities. Additionally, data reported in an LCAP is to be consistent with data reported in the SARC.

- For more information about SARC requirements, see the California Department of Education (CDE) SARC Web page at <http://www.cde.ca.gov/ta/ac/sa/>.
- For more information about the LCFF or LCAP, see the CDE LCFF Web page at <http://www.cde.ca.gov/fg/aa/lc/>.
- For additional information about the school, parents/guardians, and community members should contact the school principal or the district office.


### DataQuest

DataQuest is an online data tool located on the [CDE DataQuest Web page](#) that contains additional information about this school and comparisons of the school to the district, the county, and the state. Specifically, DataQuest is a dynamic system that provides reports for accountability (e.g., test data, enrollment, high school graduates, dropouts, course enrollments, staffing, and data regarding English learners).

### Internet Access

Internet access is available at public libraries and other locations that are publicly accessible (e.g., the California State Library). Access to the Internet at libraries and public locations is generally provided on a first-come, first-served basis. Other use restrictions may include the hours of operation, the length of time that a workstation may be used (depending on availability), the types of software programs available on a workstation, and the ability to print documents.

## Alexa Greenland

 Principal, Kavod Elementary Charter

### About Our School

Respect is the core element to successful citizenship. It is vital that children learn this at the elementary level as they are developing their personalities and forming habits that will last a lifetime. At Kavod we develop these qualities in our students by nurturing their work ethic, enhancing their academic skills, cherishing their individuality, and promoting social responsibility.

### Contact

*Kavod Elementary Charter  
3201 Marathon Dr.  
San Diego, CA 92123-2638*

*Phone: 858-386-0887  
E-mail: [director@kavodelementary.org](mailto:director@kavodelementary.org)*

## About This School

### Contact Information - Most Recent Year

District Contact Information - Most Recent Year	
<b>District Name</b>	San Diego Unified
<b>Phone Number</b>	(619) 725-8000
<b>Superintendent</b>	
<b>E-mail Address</b>	
<b>Web Site</b>	<a href="http://www.sandi.net">www.sandi.net</a>

School Contact Information - Most Recent Year	
<b>School Name</b>	Kavod Elementary Charter
<b>Street</b>	3201 Marathon Dr.
<b>City, State, Zip</b>	San Diego, Ca, 92123-2638
<b>Phone Number</b>	858-386-0887
<b>Principal</b>	Alexa Greenland
<b>E-mail Address</b>	<a href="mailto:director@kavodelementary.org">director@kavodelementary.org</a>
<b>Web Site</b>	<a href="http://www.kavodelementary.org">www.kavodelementary.org</a>
<b>County-District-School (CDS) Code</b>	37683380126730

*Last updated: 3/7/2016*

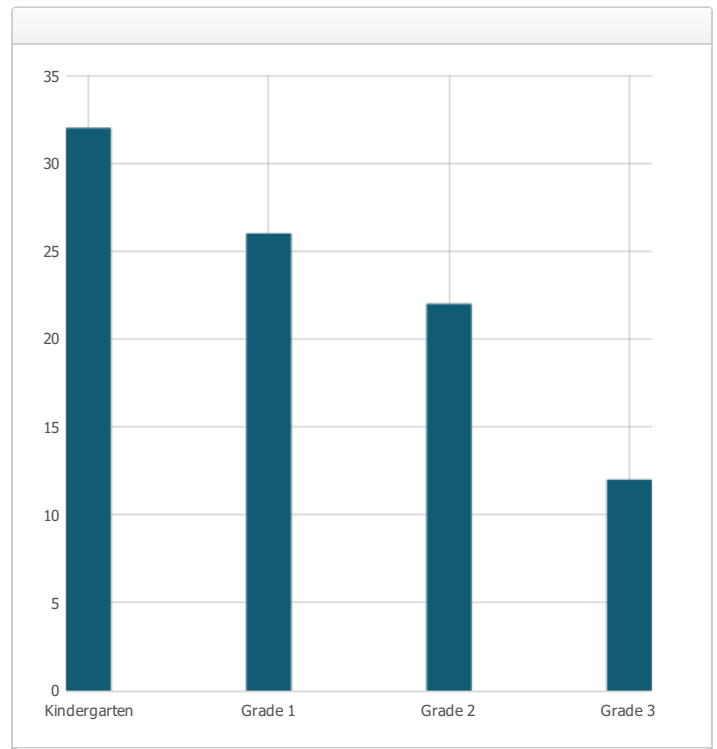
### School Description and Mission Statement - Most Recent Year

The mission of Kavod Elementary Charter School is to provide an excellent academic program while teaching modern-day Hebrew and developing socially responsible, respectful, global citizens.

*Last updated: 3/7/2016*

**Student Enrollment by Grade Level (School Year 2014-15)**

Grade Level	Number of Students
Kindergarten	32
Grade 1	26
Grade 2	22
Grade 3	12
Total Enrollment	92



Last updated: 3/7/2016

**Student Enrollment by Student Group (School Year 2014-15)**

Student Group	Percent of Total Enrollment
Black or African American	9.8 %
American Indian or Alaska Native	0.0 %
Asian	0.0 %
Filipino	0.0 %
Hispanic or Latino	18.5 %
Native Hawaiian or Pacific Islander	0.0 %
White	63.0 %
Two or More Races	5.4 %
Socioeconomically Disadvantaged	27.2 %
English Learners	18.5 %
Students with Disabilities	3.3 %
Foster Youth	1.1 %

Last updated: 3/7/2016

## A. Conditions of Learning

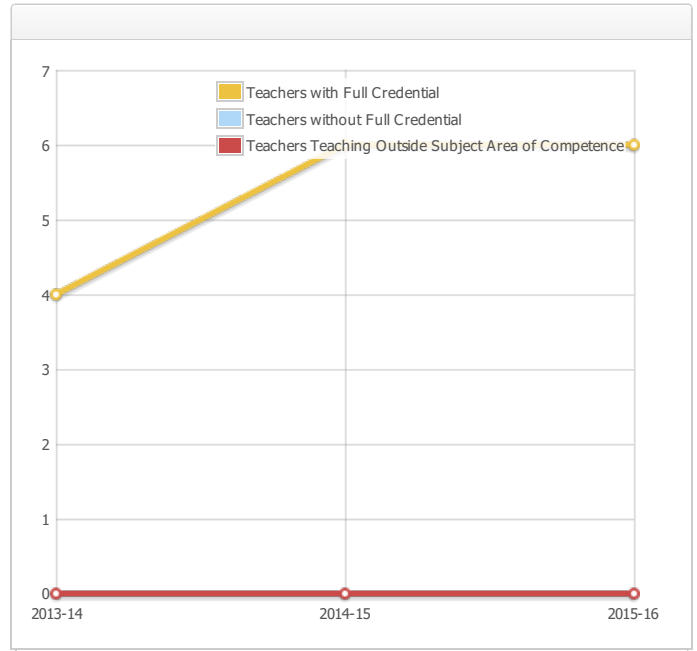
### State Priority: Basic

The SARC provides the following information relevant to the State priority: Basic (Priority 1):

- Degree to which teachers are appropriately assigned and fully credentialed in the subject area and for the pupils they are teaching;
- Pupils have access to standards-aligned instructional materials; and
- School facilities are maintained in good repair

#### Teacher Credentials

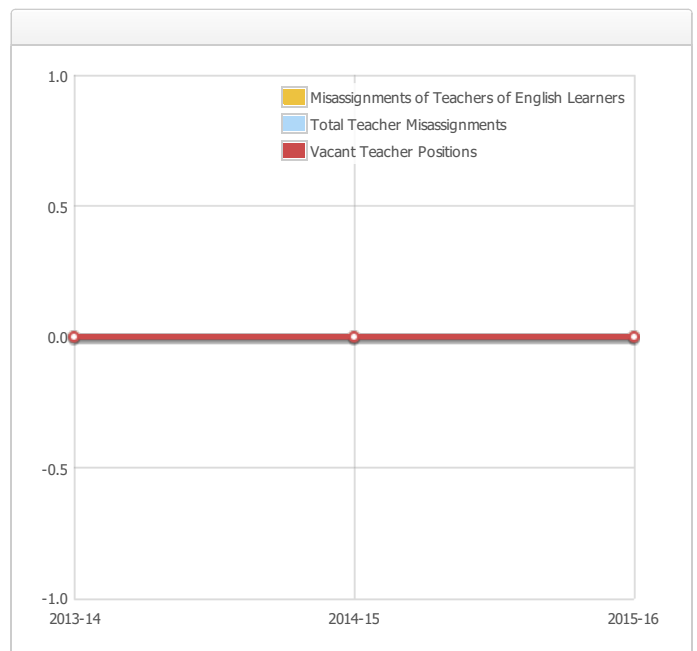
Teachers	School			District
	2013-14	2014-15	2015-16	2015-16
With Full Credential	4	6	6	
Without Full Credential				
Teachers Teaching Outside Subject Area of Competence (with full credential)	0	0	0	



Last updated: 3/7/2016

#### Teacher Misassignments and Vacant Teacher Positions

Indicator	2013-14	2014-15	2015-16
Misassignments of Teachers of English Learners	0	0	0
Total Teacher Misassignments*	0	0	0
Vacant Teacher Positions	0	0	0



Note: "Misassignments" refers to the number of positions filled by teachers who lack legal authorization to teach that grade level, subject area, student group, etc.

\* Total Teacher Misassignments includes the number of Misassignments of Teachers of English learners.

Last updated: 3/7/2016

**Core Academic Classes Taught by Highly Qualified Teachers (School Year 2014-15)**

<b>Location of Classes</b>	<b>Percent of Classes In Core Academic Subjects Taught by Highly Qualified Teachers</b>	<b>Percent of Classes In Core Academic Subjects Not Taught by Highly Qualified Teachers</b>
This School	100.0%	0.0%
All Schools in District	98.0%	2.0%
High-Poverty Schools in District	98.0%	2.0%
Low-Poverty Schools in District	98.0%	2.0%

Note: High-poverty schools are defined as those schools with student eligibility of approximately 40 percent or more in the free and reduced price meals program. Low-poverty schools are those with student eligibility of approximately 39 percent or less in the free and reduced price meals program.

**School Facility Conditions and Planned Improvements - Most Recent Year**

Co-located with a SDUSD public school. All aspects are adequate.

*Last updated: 3/7/2016*

## B. Pupil Outcomes

### State Priority: Pupil Achievement

The SARC provides the following information relevant to the State priority: Pupil Achievement (Priority 4):

- Statewide assessments (i.e., California Assessment of Student Performance and Progress [CAASPP], Science California Standards Tests); and
- The percentage of pupils who have successfully completed courses that satisfy the requirements for entrance to the University of California and the California State University, or career technical education sequences or programs of study

#### California Assessment of Student Performance and Progress Results for All Students (School Year 2014-15)

Subject	Percent of Students Meeting or Exceeding the State Standards		
	School	District	State
English Language Arts / Literacy (grades 3-8 and 11)	67.0%	50.0%	44.0%
Mathematics (grades 3-8 and 11)	50.0%	41.0%	33.0%

Note: Percentages are not calculated when the number of students tested is ten or less, either because the number of students in this category is too small for statistical accuracy or to protect student privacy. Double dashes (--) appear in the table when the number of students tested is ten or less.

*Last updated: 3/7/2016*

**CAASPP Assessment Results - English Language Arts (ELA)****Disaggregated by Student Groups, Grades Three through Eight and Eleven (School Year 2014-15)****ELA - Grade 3**

Student Group	Total Enrollment	Number Tested	Percent Tested	Percent Achievement Level 1*	Percent Achievement Level 2*	Percent Achievement Level 3*	Percent Achievement Level 4*
All Students	13	12	92.3%	17.0%	17.0%	33.0%	33.0%
Male	13	8	61.5%	--	--	--	--
Female	13	4	30.8%	--	--	--	--
Black or African American	13	1	7.7%	--	--	--	--
American Indian or Alaska Native	0	0	0.0%	0.0%	0.0%	0.0%	0.0%
Asian	0	0	0.0%	0.0%	0.0%	0.0%	0.0%
Filipino	0	0	0.0%	0.0%	0.0%	0.0%	0.0%
Hispanic or Latino	13	2	15.4%	--	--	--	--
Native Hawaiian or Pacific Islander	0	0	0.0%	0.0%	0.0%	0.0%	0.0%
White	13	8	61.5%	--	--	--	--
Two or More Races	13	1	7.7%	--	--	--	--
Socioeconomically Disadvantaged	13	3	23.1%	--	--	--	--
English Learners	13	3	23.1%	--	--	--	--
Students with Disabilities	13	1	7.7%	--	--	--	--
Students Receiving Migrant Education Services	0	0	0.0%	0.0%	0.0%	0.0%	0.0%
Foster Youth	--	--	--	--	--	--	--

Double dashes (--) appear in the table when the number of students is ten or less, either because the number of students in this category is too small for statistical accuracy or to protect student privacy.

Note: The number of students tested includes students that did not receive a score; however the number of students tested is not the number that was used to calculate the achievement level percentages. The achievement level percentages are calculated using students with scores.

\* Level 1 = Standard not met  
 Level 2 = Standard nearly met  
 Level 3 = Standard met  
 Level 4 = Standard exceeded

*Last updated: 3/7/2016*



# State Priority: Other Pupil Outcomes

The SARC provides the following information relevant to the State priority: Other Pupil Outcomes (Priority 8):

- Pupil outcomes in the subject areas of English, mathematics, and physical education

## C. Engagement

### State Priority: Parental Involvement

The SARC provides the following information relevant to the State priority: Parental Involvement (Priority 3):

- Efforts the school district makes to seek parent input in making decisions for the school district and each schoolsite

#### Opportunities for Parental Involvement - Most Recent Year

Kavod has a Kavod parent committee and a parent representative on the board. Parents have the opportunity to organize and run various events at the school and each class has a room parent to help engage all parents. Kavod offers parent feedback surveys twice a year and uses the feedback to drive changes at the school. There are many activities and events for parents to get involved at the class and the school level. Parent conferences are held twice a year. Additionally, Kavod has monthly newsletters for the parents and a website updated weekly to provide parents with information.

### State Priority: Pupil Engagement

*Last updated: 3/7/2016*

The SARC provides the following information relevant to the State priority: Pupil Engagement (Priority 5):

- High school dropout rates; and
- High school graduation rates

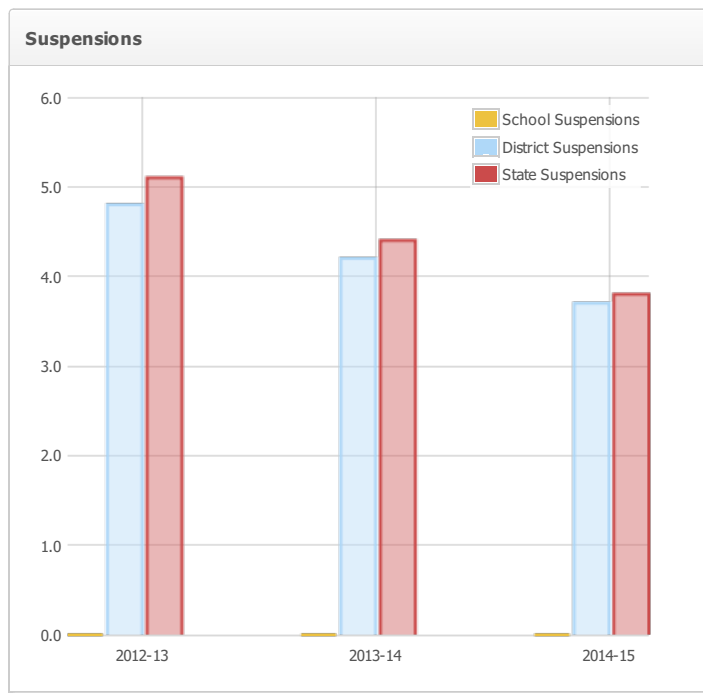
# State Priority: School Climate

The SARC provides the following information relevant to the State priority: School Climate (Priority 6):

- Pupil suspension rates;
- Pupil expulsion rates; and
- Other local measures on the sense of safety

## Suspensions and Expulsions

Rate	School			District			State		
	2012-13	2013-14	2014-15	2012-13	2013-14	2014-15	2012-13	2013-14	2014-15
Suspensions	0.0	0.0	0.0	4.8	4.2	3.7	5.1	4.4	3.8
Expulsions	0.0	0.0	0.0	0.1	0.1	0.1	0.1	0.1	0.1



Last updated: 3/7/2016

## School Safety Plan - Most Recent Year

The Kavod safety plan is reviewed and updated yearly and reviewed at a public board meeting; most recently the safety plan was reviewed in November of 2015. Kavod uses the SDUSD template.

Last updated: 3/7/2016

## D. Other SARC Information

The information in this section is required to be in the SARC but is not included in the state priorities for LCFF.

### Federal Intervention Program (School Year 2015-16)

Indicator	School	District
Program Improvement Status	Not in PI	In PI
First Year of Program Improvement		2009-2010
Year in Program Improvement		Year 3
Number of Schools Currently in Program Improvement	N/A	155
Percent of Schools Currently in Program Improvement	N/A	79.5%

Note: Cells with NA values do not require data.

*Last updated: 3/7/2016*